

ISO 19214:2017

AVRIL 2017

www.afnor.org

Ce document est à usage exclusif et non collectif des clients AFNOR.
Toute mise en réseau, reproduction et rediffusion, sous quelque forme que ce soit, même partielle, sont strictement interdites.

This document is intended for the exclusive and non collective use of AFNOR customers.
All network exploitation, reproduction and re-dissemination, even partial, whatever the form (hardcopy or other media), is strictly prohibited.



**DOCUMENT PROTÉGÉ
PAR LE DROIT D'AUTEUR**

Droits de reproduction réservés. Sauf prescription différente, aucune partie de cette publication ne peut être reproduite ni utilisée sous quelque forme que ce soit et par aucun procédé, électronique ou mécanique, y compris la photocopie et les microfilms, sans accord formel.

Contacteur :
AFNOR – Norm'Info
11, rue Francis de Pressensé
93571 La Plaine Saint-Denis Cedex
Tél : 01 41 62 76 44
Fax : 01 49 17 92 02
E-mail : norminfo@afnor.org

afnor

AFNOR

Pour : GN-MEBA

Client : 23432617

le : 06/03/2018 à 11:58

Diffusé avec l'autorisation de l'éditeur

Distributed under licence of the publisher

PROCLAMATION

NO. 127

INTERNATIONAL STANDARD

ISO 19214

First edition
2017-04

Microbeam analysis — Analytical electron microscopy — Method of determination for apparent growth direction of wirelike crystals by transmission electron microscopy

*Analyse par microfaisceaux — Microscopie électronique analytique
— Méthode de détermination de la direction apparente de croissance
des cristaux filiformes par microscopie électronique en transmission*



Reference number
ISO 19214:2017(E)

© ISO 2017

ISO 19214:2017(E)



COPYRIGHT PROTECTED DOCUMENT

© ISO 2017, Published in Switzerland

All rights reserved. Unless otherwise specified, no part of this publication may be reproduced or utilized otherwise in any form or by any means, electronic or mechanical, including photocopying, or posting on the internet or an intranet, without prior written permission. Permission can be requested from either ISO at the address below or ISO's member body in the country of the requester.

ISO copyright office
Ch. de Blandonnet 8 • CP 401
CH-1214 Vernier, Geneva, Switzerland
Tel. +41 22 749 01 11
Fax +41 22 749 09 47
copyright@iso.org
www.iso.org

ISO 19214:2017(E)

Contents

	Page
Foreword	iv
Introduction	v
1 Scope	1
2 Normative references	1
3 Terms and definitions	1
4 Specimens	2
5 Analysis procedure	2
5.1 Setting the TEM operating condition.....	2
5.1.1 Preparation of the TEM.....	2
5.1.2 Accelerating voltage.....	2
5.1.3 Setting the specimen.....	2
5.1.4 Calibration of the rotation angle.....	2
5.2 Data acquisition.....	3
5.2.1 Select the target crystal.....	3
5.2.2 Obtaining diffraction patterns.....	3
5.2.3 Determining interplanar spacing.....	4
5.2.4 Index diffraction patterns.....	4
5.2.5 Non-uniqueness of the indexing result.....	5
5.3 Determination of the crystalline direction.....	5
5.3.1 General approach.....	5
5.3.2 Simplified procedure for special situations.....	8
5.3.3 Convert the crystallographic index.....	8
5.3.4 Result of the multiplicity factor.....	9
6 Uncertainty estimation	9
7 Test report	10
Annex A (informative) Relationships of Miller notation and Miller-Bravais notation for hexagonal crystals	11
Annex B (informative) Matrix G and G⁻¹ for the crystal systems	12
Annex C (informative) Example of a test report	14
Bibliography	15

ISO 19214:2017(E)

Foreword

ISO (the International Organization for Standardization) is a worldwide federation of national standards bodies (ISO member bodies). The work of preparing International Standards is normally carried out through ISO technical committees. Each member body interested in a subject for which a technical committee has been established has the right to be represented on that committee. International organizations, governmental and non-governmental, in liaison with ISO, also take part in the work. ISO collaborates closely with the International Electrotechnical Commission (IEC) on all matters of electrotechnical standardization.

The procedures used to develop this document and those intended for its further maintenance are described in the ISO/IEC Directives, Part 1. In particular, the different approval criteria needed for the different types of ISO documents should be noted. This document was drafted in accordance with the editorial rules of the ISO/IEC Directives, Part 2 (see www.iso.org/directives).

Attention is drawn to the possibility that some of the elements of this document may be the subject of patent rights. ISO shall not be held responsible for identifying any or all such patent rights. Details of any patent rights identified during the development of the document will be in the Introduction and/or on the ISO list of patent declarations received (see www.iso.org/patents).

Any trade name used in this document is information given for the convenience of users and does not constitute an endorsement.

For an explanation on the voluntary nature of standards, the meaning of ISO specific terms and expressions related to conformity assessment, as well as information about ISO's adherence to the World Trade Organization (WTO) principles in the Technical Barriers to Trade (TBT) see the following URL: www.iso.org/iso/foreword.html.

This document was prepared by Technical Committee ISO/TC 202, *Microbeam analysis*, Subcommittee SC 3, *Analytical electron microscopy*.

ISO 19214:2017(E)

Introduction

Wirelike crystals (including beltlike crystals) are a main component in some advanced materials, especially nanomaterials, and also appear in traditional materials, such as needle-shaped precipitates in steels and alloys. Controlling the microstructure of these materials during fabrication is very important for quality control considerations. To control the microstructure and thereby improve the service properties of the relevant materials, the apparent growth direction or the longest axis of the wires is one of the essential parameters. This direction is generally determined for wirelike crystals whose diameter or thickness and width is ranged from tens to hundreds of nanometres by transmission electron microscopy (TEM).

ISO 19214:2017

Introduction

The present International Standard is intended to provide a common framework for the development of standards for the management of information security. It is based on the ISO/IEC 27000 family of standards, which provides a common framework for the development of standards for the management of information security. The present International Standard is intended to provide a common framework for the development of standards for the management of information security. It is based on the ISO/IEC 27000 family of standards, which provides a common framework for the development of standards for the management of information security.

Microbeam analysis — Analytical electron microscopy — Method of determination for apparent growth direction of wirelike crystals by transmission electron microscopy

1 Scope

This document prescribes a method for the determination of apparent growth direction by transmission electron microscopy. It is applicable to all kinds of wirelike crystalline materials fabricated by various methods. This document can also guide in ascertaining an axis direction of the second-phase particles with a rod-like or polygonal shape in steels, alloys or other materials. The applicable diameter or width of the crystals to be tested is in the range of tens to hundreds of nanometres, depending on the accelerating voltage of the TEM and the material itself.

NOTE In the present document, wirelike crystals, beltlike crystals, needle-shaped second-phase particles, etc. are all subsumed by the broad category of wirelike crystals.

2 Normative references

The following documents are referred to in the text in such a way that some or all of their content constitutes requirements of this document. For dated references, only the edition cited applies. For undated references, the latest edition of the referenced document (including any amendments) applies.

ISO 24173, *Microbeam analysis — Guidelines for orientation measurement using electron backscatter diffraction*

ISO 25498:2010, *Microbeam analysis — Analytical electron microscopy — Selected-area electron diffraction analysis using a transmission electron microscope*

3 Terms and definitions

For the purposes of this document, the terms and definitions given in ISO 24173 and the following apply.

ISO and IEC maintain terminological databases for use in standardization at the following addresses:

- IEC Electropedia: available at <http://www.electropedia.org/>
- ISO Online browsing platform: available at <http://www.iso.org/obp>

3.1

wirelike crystal

crystal resembling a thread with a diameter or width measuring in nanometres

3.2

apparent growth direction

crystalline direction which is parallel to the longest dimension of a single crystal

Note 1 to entry: Apparent growth direction does not involve mechanisms of the phase interface migration.

3.3

Miller notation

indexing system for diffraction patterns, which describes a crystal lattice by three axes coordinate

ISO 19214:2017(E)

3.4

Miller-Bravais notation

indexing system for diffraction patterns of hexagonal crystal, which describes the lattice by four axes coordinate

4 Specimens

4.1 The sample crystals shall be clean, without contamination or oxidation. They are stable under electron beam irradiation during TEM analysis.

4.2 Powder or extracted powder specimens of the crystals may be analyzed. The sample powder shall be well dispersed by a suitable technique so that individual crystals can be observed under the TEM.

NOTE One of the techniques in common use is ultrasonic dispersion. In this method, the sample powder is immersed in ethanol or pure water and dispersed by ultrasonication for about 0,5 h to 1 h, then dropped onto the supporting film surface of a microgrid. Afterward, the microgrids are dried at room temperature. The wirelike crystals are usually parallel to the supporting film plane. Other techniques to prepare individual crystal specimens can also be adopted, depending upon the physical characteristics of the sample[2].

4.3 The precipitates or second-phase particles in steels, alloys and the like may be extracted, then treated as powder specimens; see [4.2](#).

4.4 Thin-foil specimens of various solid substances prepared by suitable methods are applicable. The specimen shall be thin enough to transmit the electron beam[3].

5 Analysis procedure

5.1 Setting the TEM operating condition

5.1.1 Preparation of the TEM

The TEM working condition shall comply with ISO 25498:2010, 8.1.

5.1.2 Accelerating voltage

The applicable accelerating voltage of the TEM for the analysis mainly depends upon the thickness of the specimen to be studied. Stability of the crystals under electron beam irradiation is also important for the accelerating voltage setting. As long as the structure and/or morphology of the specimen are not altered during the analysis, clear images and sharp diffraction patterns can be obtained on the TEM. The corresponding accelerating voltage or higher may be suitable for the work.

5.1.3 Setting the specimen

Place the specimen to be tested firmly in the double-tilting or tilting-rotation specimen holder, then insert the holder into the specimen chamber. It is recommended to use the cold finger of TEM before conditioning.

5.1.4 Calibration of the rotation angle

As specified in ISO 25498:2010, 8.1.6, to be able to successfully correlate the axis of interest in an image with the corresponding diffraction pattern, the rotation angle between the micrograph and its corresponding diffraction pattern may need to be calibrated. A molybdenum trioxide crystal specimen

ISO 19214:2017(E)

may be used as a reference for the rotation angle calibration. The analyst may refer to textbooks such as References [4] and [5] for the experimental procedure for this calibration.

NOTE For some transmission electron microscopes, the rotation angle has been compensated by the manufacturer. In this case, step 5.1.4 can be ignored.

5.2 Data acquisition

5.2.1 Select the target crystal

On the viewing screen, TV monitor, or computer screen of the TEM, get an overview image of the specimen in low magnification mode. Select an individual crystal which is clean and free from damage or distortion as the target. Under bright-field imaging mode, adjust the magnification to get a clear magnified image of the target crystal. Adjust the specimen height (Z axis) to the eucentric position. Focus the image.

5.2.2 Obtaining diffraction patterns

5.2.2.1 General

Various electron diffraction techniques may be applicable for determination of the crystal axis direction. The selected area electron diffraction (SAED) and microbeam diffraction techniques are in common use; however, for the present purpose, the spot diffraction patterns or the patterns formed by the incident beam through a small angle aperture are preferred.

5.2.2.2 Procedure

The procedure for taking diffraction patterns and images of the target crystal is as follows.

- a) Select a suitable position of the target crystal in the specimen and select a diffraction mode (SAED, microdiffraction, or other suitable mode). Switch to the diffraction mode to get a spot diffraction pattern. Tilt the specimen slightly so that the brightness distribution on the diffraction pattern is symmetrical and a zero-order Laue zone pattern is displayed. Therefore, the zone axis, Z_1 (with index $[u_1v_1w_1]$), of this diffraction pattern is nearly reverse parallel to the incident beam direction, B . Record this diffraction pattern, Z_1 , and take note of the reading on the X and Y tilting angle of the double tilting specimen stage as X_1 and Y_1 , respectively.

Refer to the instruction manual provided by the microscope manufacturer for the operation procedure for each diffraction mode.

- b) Switch back to the imaging mode without changing the specimen orientation to get a correlative bright field image, M_1 , of the target crystal. Check the focus of this image and take a photo or save it in the computer system. This image, M_1 , is formed under the incident beam direction, B_1 , which is approximately reversely parallel to the zone axis, Z_1 .
- c) Return to the diffraction mode and tilt the specimen to produce a second diffraction pattern with zone axis Z_2 . Record this diffraction pattern, Z_2 , and take note of the reading on the X and Y tilt angle of the specimen holder as X_2 and Y_2 , respectively.
- d) Repeat step b) to form the second bright field image, M_2 , of the target crystal. This image, M_2 , is formed under the incident beam direction, B_2 , which is nearly reversely parallel to the zone axis, Z_2 , of the specimen.
- e) The angle, ψ , between the two specimen holder positions (that is, the angle ψ^* between the zone axis, Z_1 , with index $[u_1v_1w_1]$ and Z_2 , with index $[u_2v_2w_2]$) can be obtained from the differences between the readings on the X and Y tilting angles at each position (see ISO 25498:2010, 8.2).

ISO 19214:2017(E)

5.2.3 Determining interplanar spacing

To determine the interplanar spacing, d_{hkl} , of the plane (hkl) in crystals, the simplified Bragg law, as shown in [Formula \(1\)](#), shall be followed.

$$R_{hkl} \times d_{hkl} = L\lambda \quad (1)$$

where

L is the camera length;

λ is the wavelength of the incident electron beam;

$L\lambda$ is the camera constant;

R_{hkl} is the distance between the central spot and the diffracted spot of crystalline plane (hkl) in the diffraction pattern.

When the camera constant $L\lambda$ is known, the interplanar spacing d_{hkl} can be found, in principle, using [Formula \(1\)](#) by measuring the distance R_{hkl} . However, in practice, $2R_{hkl}$ (the distance between the spots hkl and $\bar{h}\bar{k}\bar{l}$) shall be measured, then divided by two to calculate the distance R_{hkl} .

In most cases, the camera constant, $L\lambda$, shall be calibrated for the present work. The practical procedure for camera constant calibration is specified in ISO 25498:2010, 8.3.

Camera constant, $L\lambda$, calibration is usually performed by using a reference specimen such as polycrystalline pure gold or pure aluminium. At a given accelerating voltage, record the ring diffraction pattern of the reference specimen. Index the diffraction rings and measure the diameters $2R_{hkl}$ of the corresponding ring (hkl), respectively. Find the interplanar spacing d_{hkl} for plane (hkl) of the reference specimen by the crystallographic formulae. The diffraction constant, $L\lambda$, can then be calculated using [Formula \(1\)](#). In practice, either the $L\lambda \sim D/2$ plot or an average value of the camera constant may be used.

When crystalline structure and the confident lattice parameters of the specimen are already known, the diffraction constant, $L\lambda$, may be calculated from its diffraction pattern directly. The approximate value of $L\lambda$ can be found on a console readout display of a modern TEM.

5.2.4 Index diffraction patterns

For specimens comprised of crystals in the nanometer size regime, most of the time, only spot diffraction patterns can be observed. Kikuchi patterns seldom appear owing to their small thickness. Therefore, only the procedure for indexing spot diffraction patterns is specified in this document.

The practical procedure for indexing diffraction patterns may refer to ISO 25498:2010, Clause 9. For the convenience of applying this document, the indexing process is briefly summarized as follows[4][5][6][7]:

- a) Select two diffracted spots, $h_1k_1l_1$ and $h_2k_2l_2$, from the diffraction pattern such that these spots are nearest and next-nearest to the central spot, 000, respectively. Measure the length of correlative vectors, $g_{h_1k_1l_1}$ and $g_{h_2k_2l_2}$, which are defined as the distances from the origin, 000, to the diffraction spot $h_1k_1l_1$ and the spot $h_2k_2l_2$, respectively. Then calculate the corresponding interplanar spacing, d_{hkl} , and assign tentative index (hkl) values for each spot.
- b) Measure the included angle between the vectors $g_{h_1k_1l_1}$ and $g_{h_2k_2l_2}$, as well as the angle between $g_{h_2k_2l_2}$ and $g_{h_2-h_1, k_2-k_1, l_2-l_1}$, respectively, where $g_{h_2-h_1, k_2-k_1, l_2-l_1}$ is defined as the reciprocal vector of the diffraction spot with index $h_2 - h_1, k_2 - k_1, l_2 - l_1$. Adjust the indices for each spot such that the angle is coincident with the calculated angle by the crystallographic formulation. If the experimental value is consistent with the known value within error, the diffraction spots can be indexed.

ISO 19214:2017(E)

- c) Calculate the zone axis, Z , of the diffraction pattern $[u:v:w]$ by the zone multiplication law; see [Formula \(2\)](#):

$$u : v : w = (k_1l_2 - k_2l_1) : (l_1h_2 - l_2h_1) : (h_1k_2 - h_2k_1) \quad (2)$$

If the indices u , v and w contain a common integral factor n , divide them all by the common factor n .

- d) Assign consistent indices to the remaining spots on the diffraction pattern by using the vector addition rule.
- e) When suitable software is installed with the TEM, measurement of and calculations on the diffraction patterns can be carried out by the computer system.

5.2.5 Non-uniqueness of the indexing result

For a diffraction pattern containing only two-dimensional information (i.e. a planar section of single-crystal diffraction patterns), the indexing of this pattern is not unique. Causes for non-uniqueness of the indexing may be considered from two factors.

Firstly, the indexing non-uniqueness may result from a multiplicity of crystals with high symmetry. Different variants of a diffracting plane may be equally indexed. Accordingly the zone axis of a diffraction pattern may have a different index, i.e. variants of the zone axis, but on the stereogram, the poles of these variants are located at different positions.

Secondly, the 180° rotational symmetry of the indices (hkl) , of a plane allow the index to also be described as hkl , similarly, indices $[uvw]$ of a direction can also be uvw . Therefore, it is necessary to obtain two or more diffraction patterns, Z_1 and Z_2 , successively by tilting the specimen. The angle, ψ^* , between the zone axes, Z_1 and Z_2 , of the two patterns shall be coincident with the angle between the two specimen holder positions. Also, the indices for all of the patterns shall be consistent with each other.

5.3 Determination of the crystalline direction

5.3.1 General approach

5.3.1.1 Define the projection direction

- a) Specify the projection direction, A_1 , of the crystal to be determined on its micrograph, M_1 . As an example, micrograph M_1 and diffraction pattern Z_1 of a rod-like particle is given in [Figure 1 a\)](#) and [b\)](#), respectively. The particle is phosphide M_2P with hexagonal structure^{[8][9]}. Align the diffraction pattern Z_1 with the image M_1 carefully, after compensation of the rotation angle. Draw a line, N_1 , perpendicular to the projection direction A_1 of the crystal on the diffraction pattern Z_1 . This line, N_1 , is the normal of the projection direction, A_1 . On diffraction pattern Z_1 , identify the diffraction spot with index, $h_1k_1l_1$, which is closest to the line N_1 . The vector, $g_{h_1k_1l_1}$, from the central spot, 000 , points toward the diffraction spot $h_1k_1l_1$, and is the normal of plane $(h_1k_1l_1)$. Measure the angle, φ_1 , between the line N_1 and vector $g_{h_1k_1l_1}$. The projection direction A_1 of the rod-like particle and its normal, N_1 , are delineated on the diffraction pattern. The spot indexed as 201 is the closest one to the line N_1 . The angle φ_1 between the line N_1 and g_{201} is nearly zero in this case.

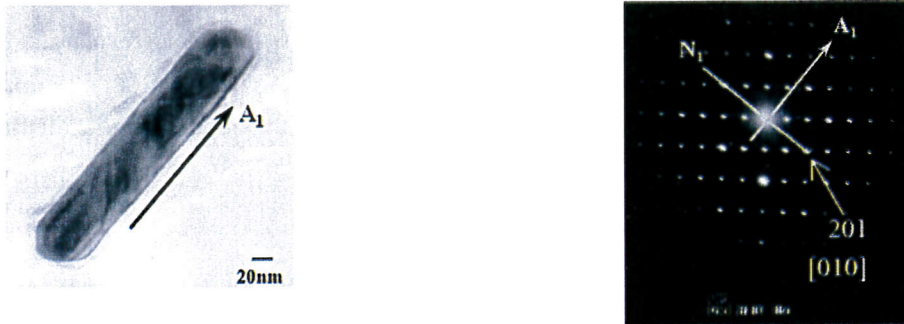
NOTE 1 In [Figure 1](#), the specimen is a phosphide (M_2P) precipitate of hexagonal structure with $c/a = 0,576$, $a = 0,609$ nm and $c = 0,351$ nm, in steels.

- b) Carry out a similar operation as step a) on the second diffraction pattern, Z_2 , and the image M_2 . Define the second projection direction, A_2 , of the crystal on the diffraction pattern Z_2 . Measure the angle, φ_2 , between the normal N_2 of projection direction A_2 and the closest direction of vector $g_{h_2k_2l_2}$, namely the normal of plane $(h_2k_2l_2)$ on the diffraction pattern Z_2 .

ISO 19214:2017(E)

- c) A similar operation as described in step a) may be performed on more diffraction patterns and their corresponding images. Each pair of diffraction pattern and the corresponding image shall be taken under the same incident beam direction B and the same TEM working condition.

NOTE 2 For hexagonal crystals, the Miller-Bravais notation can also be used to index the diffraction patterns. The relations between the Miller and Miller-Bravais notation are given in [Annex A](#).



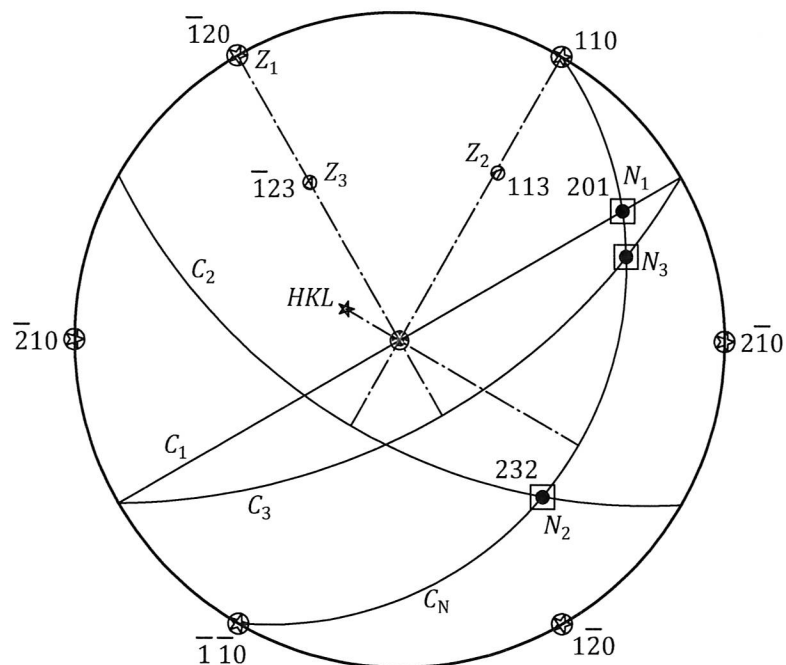
- a) Micrograph of a rod-like phosphide M_2P precipitated in a low-carbon steel
- b) Diffraction pattern $[010]$ (or $[\bar{1}\bar{2}\bar{1}0]$) of the precipitate (hexagonal structure with $c/a = 0,576$)

NOTE See Reference [8].

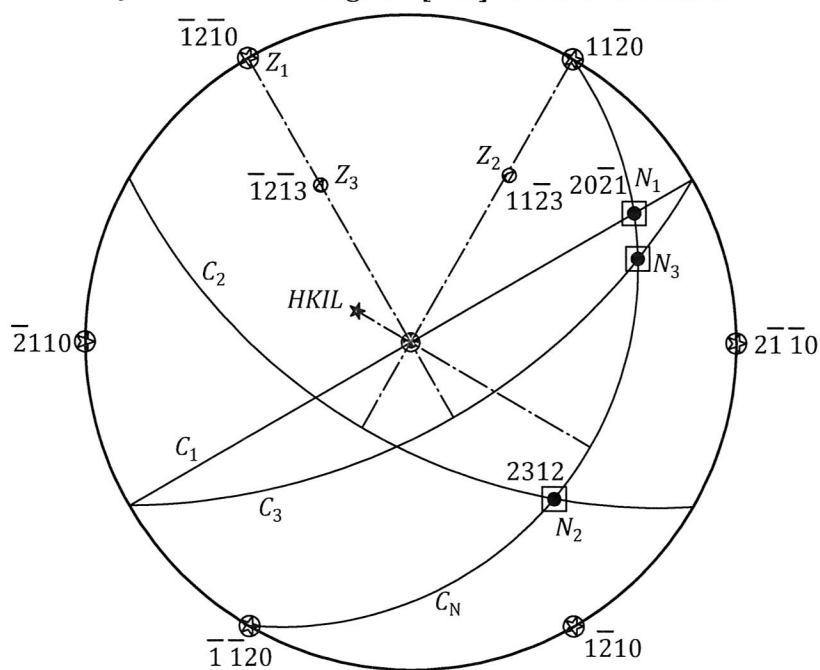
Figure 1 — Micrograph and diffraction pattern of a rod-like particle

5.3.1.2 Determining stereography

- a) Get a standard stereogram corresponding to the crystal structure of the specimen. This stereogram can also be obtained through crystallography software. On the standard stereogram, find the poles for the zone axes Z_1 , Z_2 , and others (there may be more, depending upon the specimen) (see [Figure 2](#)).
- b) Draw the great circle, C_1 , corresponding to the zone axis Z_1 . On this great circle, C_1 , mark the pole of the plane $(h_1k_1l_1)$. Then mark the pole of the normal N_1 of projection direction A_1 on the great circle C_1 by the angle, φ_1 , between the normal N_1 and the normal of plane $(h_1k_1l_1)$, which is obtained from the procedure in [5.3.1.1](#).
- c) On the same standard stereogram, draw the great circle, C_2 , corresponding to the zone axis Z_2 . On this great circle, C_2 , mark the pole of plane $(h_2k_2l_2)$, which is the normal direction of plane $(h_2k_2l_2)$. The pole of the normal N_2 of projection direction A_2 is also marked on the great circle C_2 by the angle, φ_2 , between the normal N_2 and the normal of plane $(h_2k_2l_2)$. When more diffraction patterns and images are acquired, repeat this operation to mark the correlative poles of the normal such as N_3 on the stereogram.
- d) Draw a great circle, C_N , through the poles N_1 , N_2 (and/or more poles of normal N_n of the projection directions obtained from other diffraction patterns and images). The pole of this great circle, C_N , is then the apparent growth direction, A , with index (HKL) , which is in terms of the plane normal. So far, all of the normal vectors are indexed in terms of the plane normal and have not been indexed as directions.
- e) Convert the index of the plane normal (HKL) to the crystalline direction index $[uvw]$ by using the crystallographic relation; see [Formula \(4\)](#).



a) Standard stereogram [001] in Miller notation



b) [0001] in Miller-Bravais notation

NOTE The zone axes and the poles of correlative planes are shown.

Figure 2 — Phosphide M_2P , which is hexagonal structure with $c/a = 0,576$, $a = 0,609$ nm, $c = 0,351$ nm

5.3.1.3 Repetition

Select another target crystal and repeat the procedure described in 5.2 and 5.3.

ISO 19214:2017(E)

This cycle may be repeated several times depending on the required statistics of the analysis.

5.3.2 Simplified procedure for special situations

5.3.2.1 General

When wirelike crystals are prepared as powder or extracted specimens, these nanometer crystals are mostly laid on the surface of the supporting film. Their apparent growth direction or the longest axis is usually parallel to the film surface. If the normal of the growth direction, A , approximates the simple indices, the procedure for determination of the direction may be simplified to omit the use of stereography.

5.3.2.2 Simplified Procedure

The procedure for the simplified situations is as follows.

- a) Follow the steps described in [5.2](#) to get diffraction patterns with indices and correlated images.
- b) Superimpose the micrograph of the target crystal with its corresponding diffraction pattern Z_1 . If negative films are used for recording the micrograph and diffraction pattern, keep the emulsion side up. After compensating for the rotation angle, find the reciprocal vector $g_{h_1k_1l_1}$ in the diffraction pattern, which is parallel to the normal N_1 of the projection direction A_1 . In other words, the vector $g_{h_1k_1l_1}$ is perpendicular to the previously defined axis direction, A , of the crystal. Therefore, direction A lies on the plane. When the digital camera system or imaging plates (IP) are used for recording the micrographs and diffraction patterns, the above procedure may be fulfilled by a computer system with suitable software.
- c) Repeat step b) on the second diffraction pattern, Z_2 , and the corresponding image, in order to obtain the second reciprocal vector, $g_{h_2k_2l_2}$. Similarly, this vector is perpendicular to the previously defined axis direction, A , of the crystal, and the direction A also lies on the plane ($h_2k_2l_2$).
- d) Direction A is parallel to the intersection of the plane ($h_1k_1l_1$) and ($h_2k_2l_2$) because it lies on both of the planes. The index [HKL] of the apparent growth direction A can be obtained by the zone multiplication law; see [Formula \(3\)](#):

$$H : K : L = (k_1l_2 - k_2l_1) : (l_1h_2 - l_2h_1) : (h_1k_2 - h_2k_1) \quad (3)$$

If the indices H , K and L contain a common integral factor n , divide them by the common factor n .

- e) The index [HKL] of the direction A is in terms of the plane normal. This index [HKL] shall be converted to the crystalline direction index [uvw] by crystallographic relation [see [Formula \(4\)](#)].

5.3.3 Convert the crystallographic index

Convert the index [HKL] of the apparent growth direction A from the reciprocal space into direction index [uvw] of the real space by crystallographic formulae according to its crystallographic system (see [Annex B](#)). This conversion is not required only for cubic system crystals; the direction index [uvw] is equal to index [HKL].

ISO 19214:2017(E)

The normal of a plane (hkl) may be converted into the crystalline direction [uvw] through a calculation using [Formula \(4\)](#):

$$\begin{pmatrix} u \\ v \\ w \end{pmatrix} = G^{-1} \begin{pmatrix} H \\ K \\ L \end{pmatrix} \quad (4)$$

Conversely, a crystalline direction index [uvw] can also be converted into the normal of plane (hkl) in reciprocal space by [Formula \(5\)](#):

$$\begin{pmatrix} h \\ k \\ l \end{pmatrix} = G \begin{pmatrix} u \\ v \\ w \end{pmatrix} \quad (5)$$

Where matrices G and G⁻¹ for the seven crystal systems are given in [Annex B\[Z\]](#).

For cubic system crystals, the index (hkl) of a reciprocal lattice vector g_{hkl} possesses the same value as its corresponding crystalline direction [uvw]; that is, $h = u, k = v, l = w$. For non-cubic system crystals, it is necessary to convert the index (hkl) into the indices [uvw] of the crystalline direction or zone axis.

5.3.4 Result of the multiplicity factor

Owing to the multiplicity factor, the poles of the growth direction determined from several crystals may coincide with two or more points on the same stereogram. These may be considered as growth directions that are the equivalent direction of a family {HKL}; the indexes of the direction are <uvw>.

6 Uncertainty estimation

Uncertainty of crystalline direction determination is affected by several factors. In this document, the entire uncertainty shall be treated by the following factors:

- σ_ψ uncertainty of the angle, between the two specimen holder positions, measurement;
- σ_R uncertainty of compensation of the rotation angle between image and diffraction pattern;
- σ_d uncertainty of the interplanar spacing determination;
- σ uncertainty of the angle φ , between the \mathbf{g} vector and the normal projection direction of the crystal, measurement on the diffraction pattern;
- σ_w uncertainty of the angle measurement by Wulff net on the standard stereogram.

The uncertainties σ and σ_w shall be calculated from the results by n replicate measurements.

The standard deviation σ , of the determined direction for n independent measurement is given by [Formula \(6\)](#):

$$\sigma = \sqrt{\left(\frac{\sigma}{\sqrt{n}}\right)^2 + \left(\frac{\sigma_w}{\sqrt{n}}\right)^2 + \sigma_\psi^2 + \sigma_d^2 + \sigma_R^2} \quad (6)$$

The zone axis of the diffraction pattern is approximately reversely parallel to the incident beam direction B. In a spot diffraction pattern, it is within about 4°[6]. As long as the brightness of the spots is evenly distributed on the diffraction pattern, the effect of this discrepancy is small for direction determination.

Error is introduced by operations using the stereographic projection. The angle measurement by Wulff net is also an error source. It is within 5°[6]. The poles of the apparent growth direction experimentally determined from several specimens may be distributed around the pole of HKL.

ISO 19214:2017(E)

7 Test report

An example of a test report is given in [Annex C](#).

Annex A (informative)

Relationships of Miller notation and Miller-Bravais notation for hexagonal crystals

Diffraction patterns of a hexagonal crystal may be indexed either by Miller notation or equivalently by Miller-Bravais notation. For the Miller notation, three axes coordinate system are used, i.e. indices (hkl) for plane, $[uvw]$ for direction. However, in the Miller-Bravais notation, the hexagonal system is described by four axes. The indices for a plane is $(hkil)$ and $[UVTW]$ for a direction. The two notations may be converted to each other. The relations between the Miller and Miller-Bravais notation are given by [Formulae \(A.1\)](#) and [\(A.2\)](#)[Z]:

For indices of a plane (hkl) and $(hkil)$:

$$i = -(h + k) \tag{A.1}$$

For indices of a direction $[uvw]$ and $[UVTW]$:

$$\begin{cases} U = \frac{1}{3}(2u - v) \\ V = \frac{1}{3}(2v - u) \\ T = -\frac{1}{3}(u + v) = -(U + V) \\ W = w \end{cases} \tag{A.2}$$

ISO 19214:2017(E)

Annex B
 (informative)

Matrix G and G⁻¹ for the crystal systems

The symbols *a*, *b* and *c* denote vectors of the lattice parameters of a crystal; the length of each vector is *a*, *b* and *c* respectively. The angle between *b* and *c* is α , the angle between *a* and *c* is β , and the angle between *a* and *b* is γ . See [Table B.1](#).

Table B.1 — Matrix G and G⁻¹ of the seven crystal systems^[7]

Crystalline system	G	G ⁻¹
Cubic	$\begin{pmatrix} a^2 & 0 & 0 \\ 0 & a^2 & 0 \\ 0 & 0 & a^2 \end{pmatrix}$	$\begin{pmatrix} \frac{1}{a^2} & 0 & 0 \\ 0 & \frac{1}{a^2} & 0 \\ 0 & 0 & \frac{1}{a^2} \end{pmatrix}$
Hexagonal	$\begin{pmatrix} a^2 & -\frac{a^2}{2} & 0 \\ -\frac{a^2}{2} & a^2 & 0 \\ 0 & 0 & c^2 \end{pmatrix}$	$\begin{pmatrix} \frac{4}{3a^2} & \frac{2}{3a^2} & 0 \\ \frac{2}{3a^2} & \frac{4}{3a^2} & 0 \\ 0 & 0 & \frac{1}{c^2} \end{pmatrix}$
Tetragonal	$\begin{pmatrix} a^2 & 0 & 0 \\ 0 & a^2 & 0 \\ 0 & 0 & c^2 \end{pmatrix}$	$\begin{pmatrix} \frac{1}{a^2} & 0 & 0 \\ 0 & \frac{1}{a^2} & 0 \\ 0 & 0 & \frac{1}{c^2} \end{pmatrix}$
Ortho-rhombic	$\begin{pmatrix} a^2 & 0 & 0 \\ 0 & b^2 & 0 \\ 0 & 0 & c^2 \end{pmatrix}$	$\begin{pmatrix} \frac{1}{a^2} & 0 & 0 \\ 0 & \frac{1}{b^2} & 0 \\ 0 & 0 & \frac{1}{c^2} \end{pmatrix}$

ISO 19214:2017(E)

Table B.1 (continued)

Crystalline system	G	G ⁻¹
Rhombohedral	$\begin{pmatrix} a^2 & a^2 \cdot \cos\alpha & a^2 \cdot \cos\alpha \\ a^2 \cdot \cos\alpha & a^2 & a^2 \cdot \cos\alpha \\ a^2 \cdot \cos\alpha & a^2 \cdot \cos\alpha & a^2 \end{pmatrix}$	$\frac{1}{a^2 \cdot B} \begin{pmatrix} \sin^2\alpha & \cos^2\alpha - \cos\alpha & \cos^2\alpha - \cos\alpha \\ \cos^2\alpha - \cos\alpha & \sin^2\alpha & \cos^2\alpha - \cos\alpha \\ \cos^2\alpha - \cos\alpha & \cos^2\alpha - \cos\alpha & \sin^2\alpha \end{pmatrix}$ <p>$B = \sin^2\alpha - 2\cos^2\alpha + 2\cos^3\alpha$</p>
Monoclinic	$\begin{pmatrix} a^2 & 0 & a \cdot c \cdot \cos\beta \\ 0 & b^2 & 0 \\ a \cdot c \cdot \cos\beta & 0 & c^2 \end{pmatrix}$	$\begin{pmatrix} \frac{1}{a^2 \cdot \sin^2\beta} & 0 & \frac{-\cos\beta}{a \cdot c \cdot \sin^2\beta} \\ 0 & \frac{1}{b^2} & 0 \\ \frac{-\cos\beta}{a \cdot c \cdot \sin^2\beta} & 0 & \frac{1}{c^2 \cdot \sin^2\beta} \end{pmatrix}$
Triclinic	$\begin{pmatrix} a^2 & a \cdot b \cdot \cos\gamma & a \cdot c \cdot \cos\beta \\ a \cdot b \cdot \cos\gamma & b^2 & b \cdot c \cdot \cos\alpha \\ a \cdot c \cdot \cos\beta & b \cdot c \cdot \cos\alpha & c^2 \end{pmatrix}$	$\frac{1}{A} \begin{pmatrix} \frac{\sin^2\alpha}{a^2} & \frac{\cos\alpha \cdot \cos\beta - \cos\gamma}{ab} & \frac{\cos\alpha \cdot \cos\gamma - \cos\beta}{ac} \\ \frac{\cos\alpha \cdot \cos\beta - \cos\gamma}{ab} & \frac{\sin^2\beta}{b^2} & \frac{\cos\beta \cdot \cos\gamma - \cos\alpha}{bc} \\ \frac{\cos\alpha \cdot \cos\gamma - \cos\beta}{ac} & \frac{\cos\beta \cdot \cos\gamma - \cos\alpha}{bc} & \frac{\sin^2\gamma}{c^2} \end{pmatrix}$ <p>$A = 1 - \cos^2\alpha - \cos^2\beta - \cos^2\gamma + 2\cos\alpha \cdot \cos\beta \cdot \cos\gamma$</p>

ISO 19214:2017(E)

Annex C (informative)

Example of a test report

Number of the testing report:

General information

Name of the testing laboratory:

Name of the client:

Address of the client:

Telephone number of the client:

Name of the TEM manufacturer and model:

TEM working condition

Operating voltage: (kV)

Image formation mode

Magnification of the image/field width

Diffraction mode:

Name and identification of the software:

International Standard reference:

Testing results

Name and serial number of the specimen:

Type of the specimen:

Typical image of the specimen morphology
(with scale bar):

Diffraction patterns:

Crystalline direction determined:

Authority

Operator name:

Testing date:

Name of person(s) authorizing:

Signature of person(s) authorizing:

Bibliography

- [1] ISO/IEC Guide 98-3:2008, *Uncertainty of measurement — Part 3: Guide to the expression of uncertainty in measurement (GUM:1995)*
- [2] ZHANG X.-F., & ZHANG Z. *Progress in transmission electron microscopy*. Tsinghua University Press, Springer-Verlag, 1999
- [3] ASTM E 3-2001: *Standard practice for preparation of metallographic specimens*
- [4] DE GRAEF Marc *Introduction to Conventional Transmission Electron Microscopy*. Cambridge University Press, 2003
- [5] WILLIAMS D.B., & CARTER B.C. *Transmission Electron Microscopy*, Springer-Verlag New York Inc, Second Edition, 2009
- [6] ANDREWS K.W., DYSON D.J., KEOWN S.R. *Interpretation of electron diffraction patterns*, Second Edition, 1971. (Hilger, London, ISBN 0 85274 170 7)
- [7] GUO K., HENGQIANG Y.E., YUKUN W.U. *Application of electron diffraction patterns in crystallography*. Science Press, China, 1983
- [8] LIU D. Features of the ISO 25498: Method of selected area electron diffraction analysis in transmission electron microscopy. *Microsc. Microanal.* 2013 Aug, **19** () pp. 207–209
- [9] LOU Y., & LIU D. Nano phosphide in weathering steels containing Ti by CSP processing. *J. Univ. Sci. Technol. Beijing.* 2010, **32** (9) pp. 1163–1168

ISO 19214:2017(E)

Information

Information

ICS 71.040.50

Price based on 15 pages

© ISO 2017 – All rights reserved