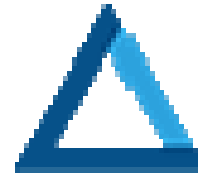




**Micro to Nano**  
Innovative Microscopy Supplies



**DELTA**  
MICROSCOPIES

# CONSOMMABLES POUR LA PREPARATION D'ECHANTILLONS POUR LE MEB

Samia Souai



GN  
MEBA

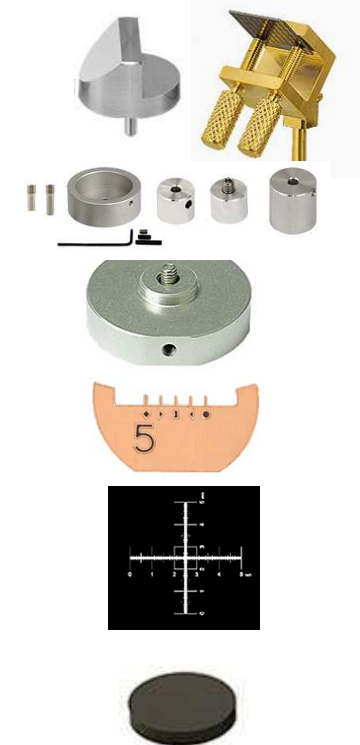


Le 2 et 3 Décembre 2019

**DELTA**  
MICROSCOPIES

# Une Ligne de produits centrée sur le MEB

- Large selection de Porte-échantillons MEB et FIB
- Adaptateurs pour Porte-échantillons
- Adaptateurs pour platines
- Substrats pour porte-échantillons
- Stockage et transport des échantillons
- Standards de calibration



# Supports pour EBSD / t-EBSD



25/30/32/40 mm mounts



Geological slide



EBSD-3D for FEI/Thermo



t-EBSD TEM & FIB-lift out grids



70° / 20° holder & cross section holders

# Supports de reference pour caractérisation

---



Geological slide holder



Quad filter holders

Top Reference holders for  $\varnothing 25 / \varnothing 30 / \varnothing 40 / \varnothing 50$  mm or  $\varnothing 1'' / \varnothing 1\text{-}\frac{1}{4}'' / \varnothing 1\text{-}\frac{1}{4}'' / \varnothing 2''$  mounts

# Adaptateurs pour platines MEB

---



JEOL



Hitachi



Zeiss / LEO



TFS / FEI / Philips

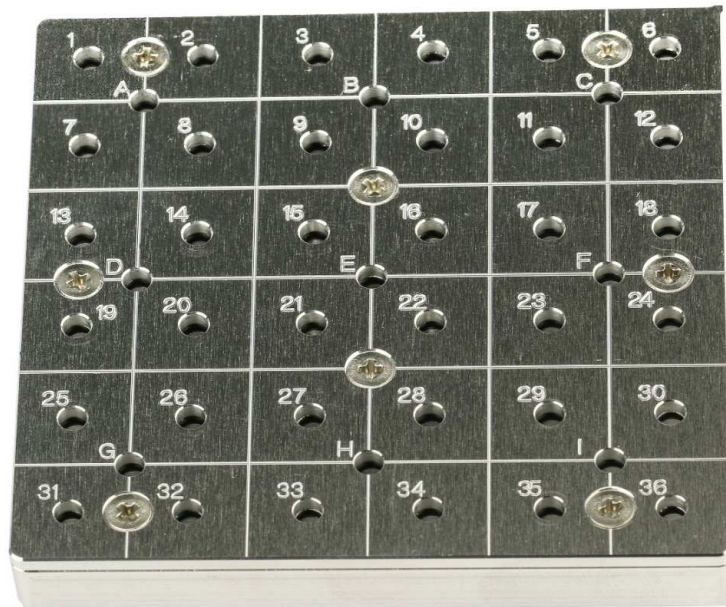


Tescan



Pemtron

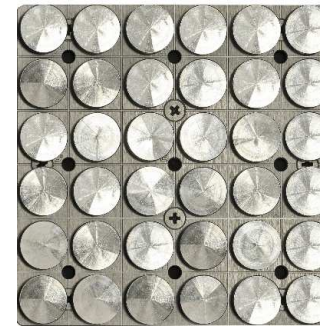
# Support multi-pin pour GSR



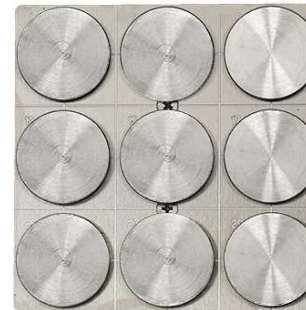
Unique reference point



Conductive O-ring to hold pin stubs



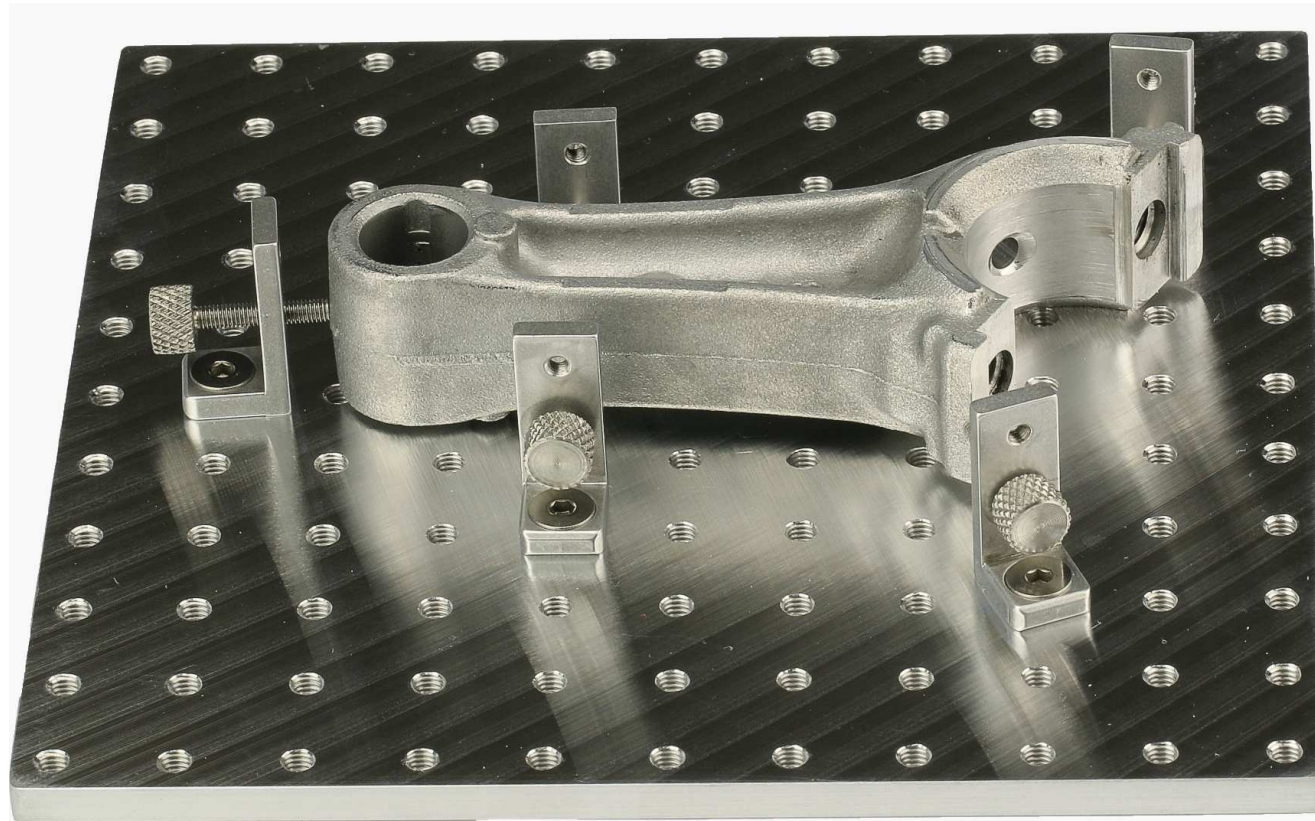
Loaded with 36 x 1/2" pin stubs



Loaded with 9 x 1" pin stubs

Automated particle analysis / GSR-analysis  
EM-Tec C-Square multi holders for 9, 16,  
18, 25, 36, 49 and 64 standard pin stubs

# Support adaptable : Versa-Plate



- 150 x 150mm plate with 121 M4 holes
- Positionable sample clamps
- Adaptable to sample shape
- Large samples
- Forensic investigations
- Extend sample stage area
- 4 sizes for large stages

# Solutions de stockage des échantillons

---



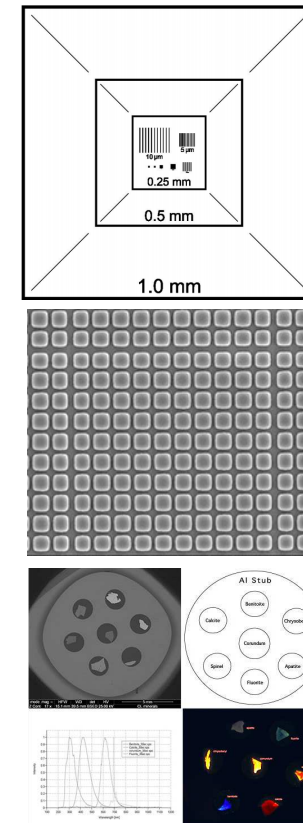
EM-Storr **vacuum** storage containers



EM-Tec Save-Storr **inert gas** containers

# Standards de calibration

- EM-Tec magnification calibration standards
  - **MCS-0.1** from 100nm to 2.5mm
  - **M-1 & M-10** grid patterns with 1 $\mu$ m and 10 $\mu$ m
  - **LAMC-15** low mag 15mm with 10 $\mu$ m intervals
  - **MTC-5** multiple targets
- EM-Tec EDS / WDS calibration standards
  - **CXS** calibration standards
  - **RSX** reference standards



Merci pour votre attention !

